

GREEN  
LIVING

Accuracy  
Commitment  
Excellence



What we are

**Crafting Interiors with Precision,  
Expert Manufacturing and Sustainability.**



What we do

**In the orchestra of interior design, we've eliminated the intermission. From concept to creation, we play a seamless symphony.**

# About

**GreenLiving** leads the furnishing industry with a pioneering vision, transforming interior design through responsible and innovative practices. Our expertise lies in crafting custom, high-quality furnishings for diverse sectors, using eco-friendly materials that ensure both elegance and durability.

Our forward-thinking approach integrates advanced technology and automation to redefine project timelines. By efficiently managing even the most complex requirements, we streamline the delivery process, ensuring projects are completed swiftly without compromising on quality.

We are a movement reshaping the furnishing sector with sustainable design and manufacturing. We empower our clients by merging technological precision with environmental responsibility, enabling the creation of beautifully sustainable spaces.

At **GreenLiving**  
we're not just a company—  
we're a movement **redefining**  
the **future** of furnishing sector.

Vision

**With seamless precision, we deliver sustainable luxury that exceeds expectations.**

We bridge the gap between luxurious living and environmental responsibility, delivering products by a fraction of the usual timelines, including complex jobs. GL's innovative platform empowers architects, interior designers, and property owners with sustainable, customisable furnishing solutions without compromising quality, style, or functionality.

**Mission**



## **Pioneering Innovation**

We constantly push the boundaries of what's possible in sustainable design and delivery.



## **Unmatched Quality**

We promise unwavering quality to ensure excellence in every product we deliver to you.



## **Absolute Transparency**

We pledge our commitment to honesty and transparency in all our processes and actions.



## **Unbounded Collaboration**

We partner with the best creators to bring our audience's vision to life, upholding quality.



## **Sustainability First**

We provide eco-friendly choices at every step, from sourcing to installation of products.

# Values

Where others **perceive** walls,  
we see canvases of **possibility**.

GreenLiving was founded with a deep appreciation for exceptional design and a strong commitment to environmental stewardship.

From day one, we've aimed to create functional, aesthetically pleasing spaces while prioritizing the health of our planet.

**Focus**



Time is the new **luxury**, with GreenLiving,  
your project isn't a distant future—  
it's tomorrow's **reality**.



We transform interior concepts into reality with precision and artistry. Our seamless production process, from design to delivery, operates as a harmonious symphony, ensuring every piece meets our rigorous standards and flows effortlessly from vision to completion.

Our state-of-the-art facility is designed to execute projects with exceptional craftsmanship and precise timing. By employing intelligent strategies at each stage, we deliver refined, sustainable furnishings that set a new standard in efficiency and industry impact.



## **Innovative Platform**

At GreenLiving, we pride ourselves on an innovative OEM platform that allows for boundless creativity and eco-conscious solutions. Our expansive platform is designed to bring unique visions to life, free from traditional limitations.

## **Design and Sustainability**

By seamlessly integrating imaginative design with sustainable practices, we ensure that every project not only meets aesthetic desires but also aligns with our commitment to environmental stewardship.

Edge

## **Just-In-Time Manufacturing**

At GreenLiving, we revolutionize production with our Just-In-Time approach. Once designs are approved, our smart factories swiftly begin and complete manufacturing swiftly, ensuring fast delivery without compromising on quality.

## **German Engineered Manufacturing**

Our precision machinery, inspired by advanced German engineering, enables the rapid and accurate execution of even the most complex designs.

**Model**

 Corporate Offices

 Hospitality

 Healthcare

 Education

 Retail Spaces

 R&D Centers

 Sports & Fitness

 Pharmaceuticals

 Automobile Showrooms

 Residential

 Industrial

 Banking & Finance

 Government Buildings

 Real Estate Development

 IT & Technology

 Logistics & Warehousing

 Cultural & Public Spaces

 Entertainment & Media

Assist



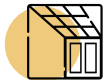
Storage/Display



Workstations



Lockers & Industrial Storage



3D Suspended Ceiling & Space Partitions



Wardrobes



Entertainment



Kitchen



Vanity

Range



Our Assurance

We expedite even the most complex interior design projects, executing custom designs and intricate installations in a fraction of the time typically required in the industry.

This is not just manufacturing— it's engineered excellence that drives progress and creates lasting value.

# Manufacturing Redefined with Innovation

With advanced machinery, seamless processes, and a dedication to continuous improvement, we set a new benchmark for the industry, delivering exceptional results that exceed expectations

Intels





We deliver modular interior solutions with a commitment to innovation, efficiency, and environmental sustainability.



Our supply chain is designed to reflect ethical practices, emphasizing responsible sourcing and reducing ecological impact.



We adhere to global standards by using certified sustainable materials, ensuring quality and environmental compliance.



Our smart manufacturing platform is designed to reduce waste, conserve energy, and achieve unparalleled operational excellence.



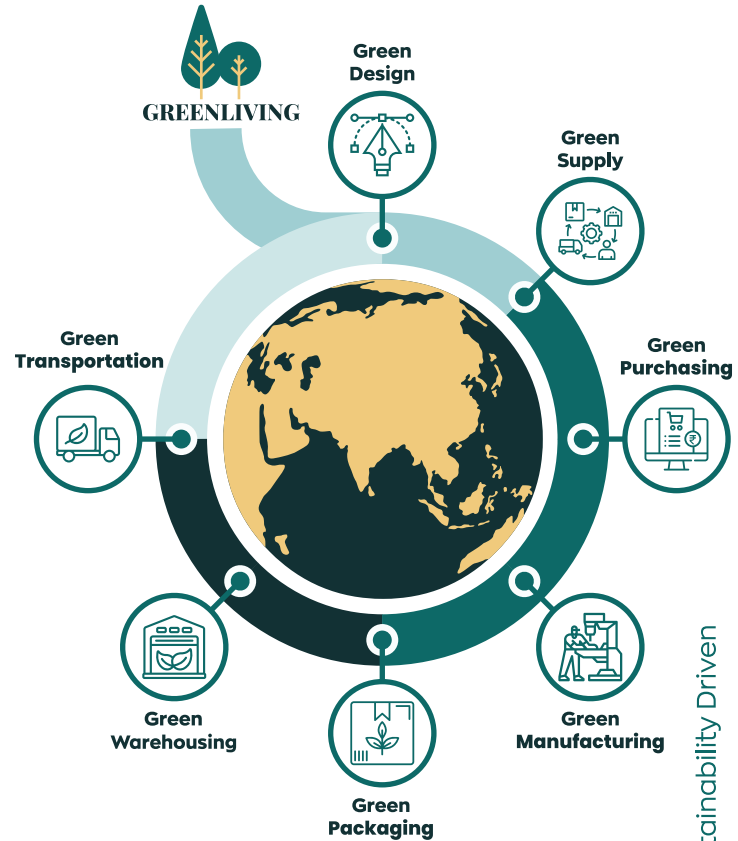
Our eco-conscious packaging solutions are designed to protect products, support waste reduction & sustainability goals.



Our warehouses leverage renewable energy and intelligent systems to maximize efficiency and support greener practices.



Our energy-efficient transport systems and strategic delivery routes, ensure reliable services with minimal environmental impact.



Sustainability Driven

# ESG



## **ISO 9001:2008**

Certification for Quality of Manufacturing & Supply



## **ISO 14001**

Environmental & Sustainability Certification



## **IS 848:2006**

Certification for the Quality of Adhesive/Resin Used



## **ISO 45001**

Occupational Health and Safety (OH&S)



## **FSC®**

Forest Stewardship Council® FSC - Certified Products



## **ASTM F2057**

Ensures tip-over safety for clothing storage units and enhance user safety.



## **UL 962**

Covers safety for furnishings & outdoor furniture, focusing on safety aspects of electrical and structural .

Our strategic approach focuses on optimizing efficiency, maintaining high-quality standards, and mitigating risks, all while ensuring clear communication and collaboration throughout the project lifecycle.

**Remarkable Standards,**  
**Redefining Collaboration**

Track



## **Efficient Scheduling**

Optimizing project timelines by carefully managing tasks, resources, and dependencies to ensure timely completion.



## **Quality Control Inspections**

Performing comprehensive inspections throughout the project to uphold consistent quality and meet set standards.



## **Stakeholder Coordination**

Ensuring smooth communication and collaboration between all parties involved for seamless project execution.



## **Progress Reporting & Documentation**

Providing detailed updates on milestones and maintaining clear records for transparency and accountability.



## **Risk Mitigation Strategies**

Identifying potential risks early and implementing strategies to reduce impact, ensuring successful project delivery.



## **Post Handover Issue Remediation**

Addressing any post-project issues promptly, ensuring the final result meets the client's expectations and standards.

# Bespoke brilliance at breathtaking speed

Join us in transforming the art of interior design through  
precision manufacturing.

With GreenLiving, you're not just enhancing spaces—  
you're committing to a greener future.

+91 89777 40876  
hello@greenliving.in

+91 89777 40877  
www.greenliving.in

25A, Phase IV, Pashamylaram, Sangareddy,  
Hyderabad, Telangana 502307, India.

Connect

© 2024–2025 GreenLiving. All Rights Reserved.